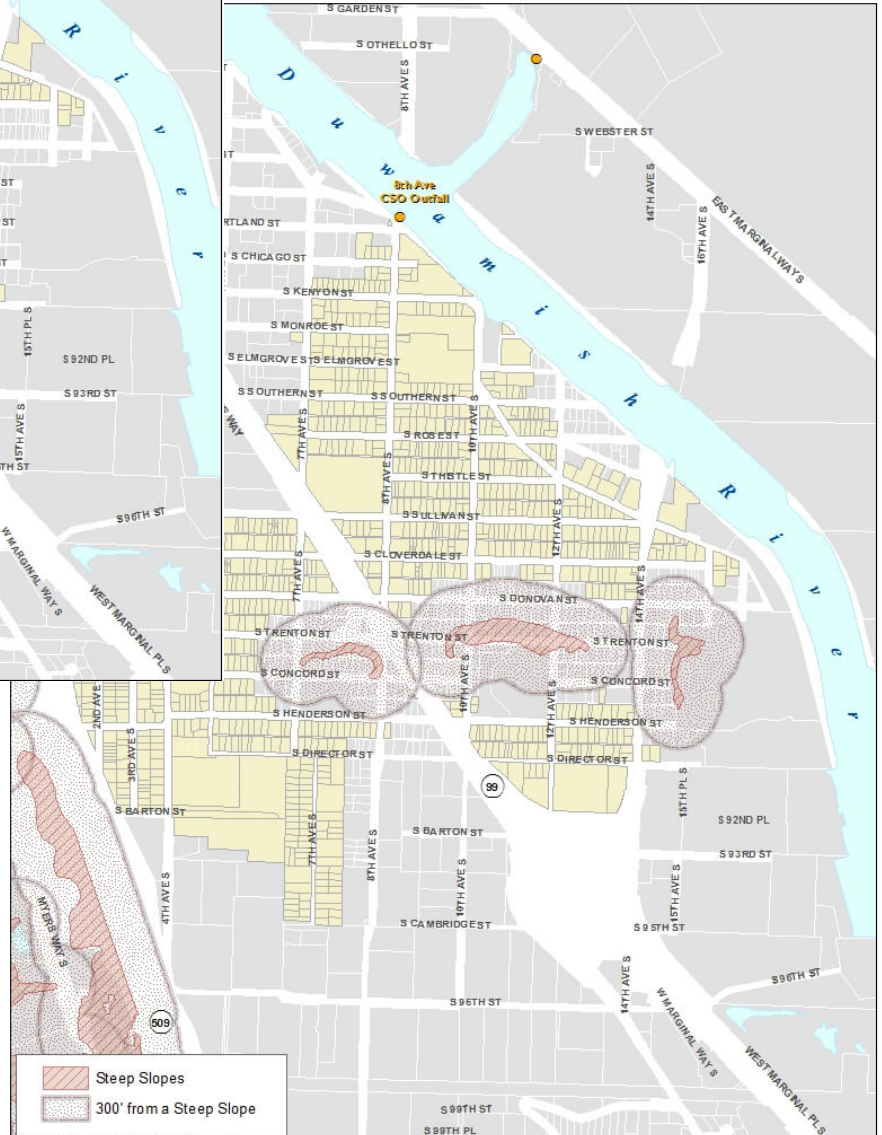
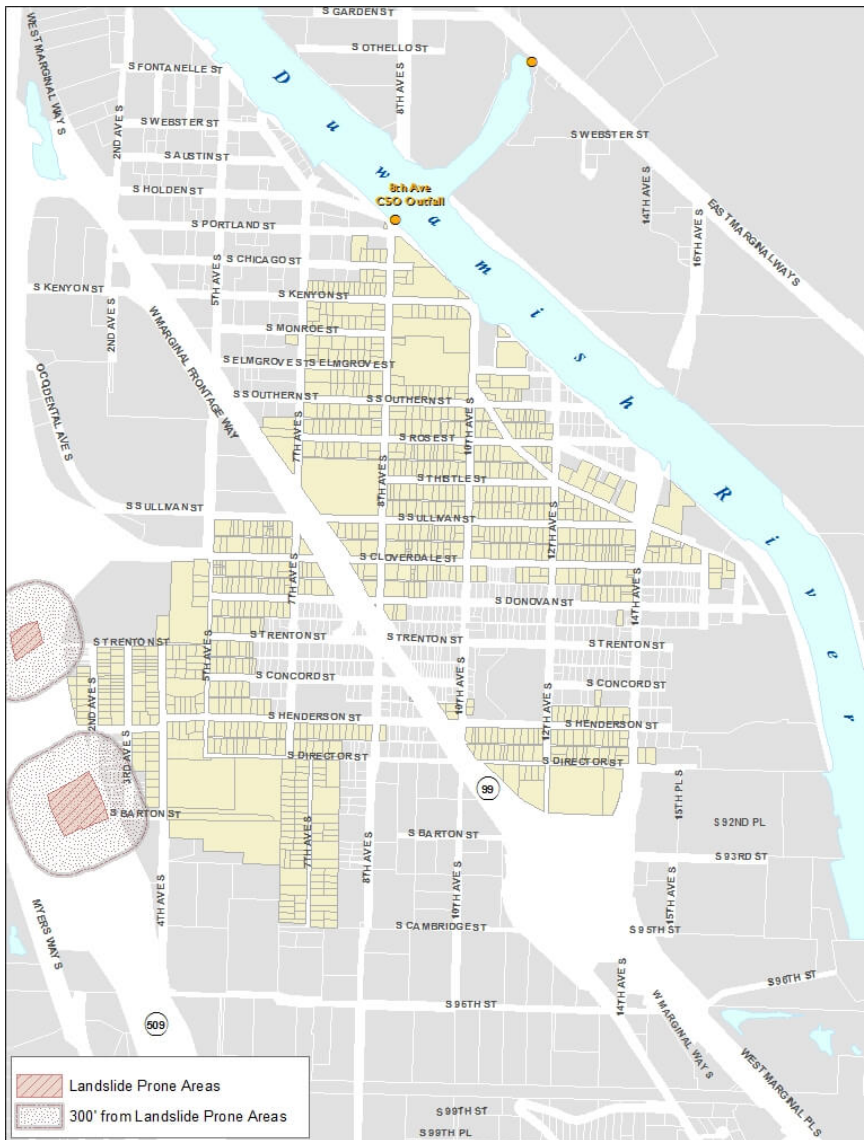


2. Land Stability

Rain gardens cannot be within 300 feet of a steep slope or a landslide prone area. Infiltrating water can destabilize slopes.

The two maps below show steep slopes and landslide prone areas in South Park.



3. Sufficient Distance

Rain gardens must be at least 100 feet away from contaminated sites, landfills, and underground storage tanks. Otherwise, the percolating water could mobilize and spread contaminants from these sites.

4. Adequate Drainage

Of course, rain garden eligible parcels must have soils that drain quickly so that water infiltrates (soaks in). By combining these factors, we determine which sites are eligible for rain gardens, cisterns, or both.

The maps below show unsuitable infiltration sites and finally, which parcels are eligible for rain gardens.



For more information, please visit:
www.rainwise.seattle.gov

Completed by Urban Systems Design.